

Our Foreign Letter.

FROM CAPETOWN.

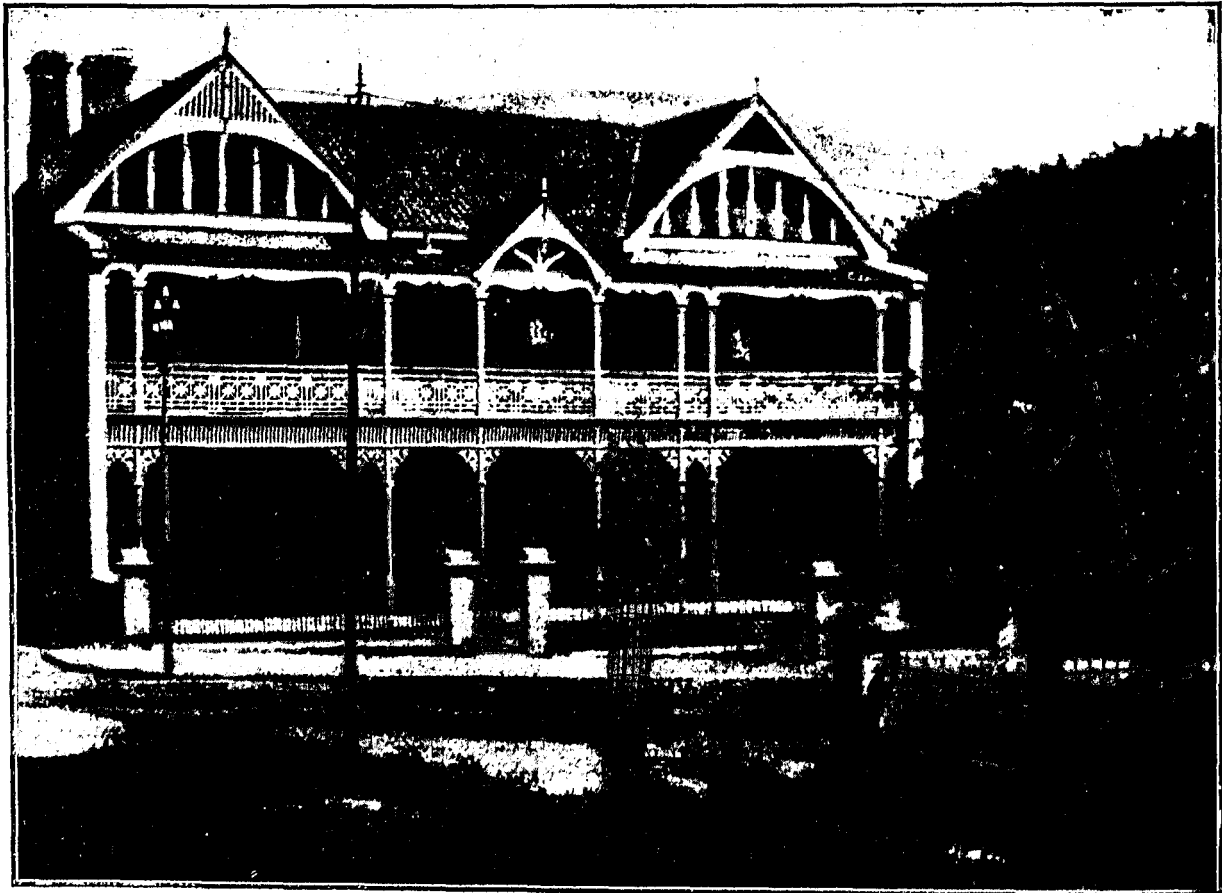
DEAR MADAM,—So many nurses keep coming and going between England and the Cape that I feel sure they would be pleased to know what a comfortable and happy home we have here in the Victoria Nurses' Institute in Hof Street, which is the very nicest home I have ever stayed in in connection with private nursing, and is only to be



head of such establishments who makes for sunshine or shadow in the house, and in this instance it is all sunshine and peace.

The Victoria Nurses' Institute is managed entirely by women, her Excellency the Honourable Lady Hely-Hutchinson being one of the patronesses. Lady Buchanan is President. The Committee is composed of women, and the Hon. Treasurer and Hon. Secretary are also of that domesticated and managing sex, and, to judge from the results of their kind thought on our behalf, it is high time women were given a proper share in the management of all hospitals and institutions depending upon domestic management for their efficiency.

I am enclosing you a copy of the sixth Annual Report, from which you will see that the finances are sound, and that the year ending September 30th closes with a balance in hand. I know your little weakness for a sound financial condition of affairs.



VICTORIA NURSES' INSTITUTE, CAPE TOWN.

compared in comfort and homeliness to the Home of Rest at Brighton. All who have stayed at the Victoria look forward to returning to it, and you can imagine what happiness this is—for nurses to know that between cases, or when in need of rest, a place is open to them where love and kindness reign supreme, under the delightful management of Miss Damon, the Lady Superintendent. We all know that it is the

You will also see that, similarly to other local works, the Institute has felt the present high rate of living, and to meet the increased expenditure the Committee deemed it expedient under the circumstances to slightly raise the charge made for the midday dinner, and further to increase the nurses' percentage fees from 5 to 7½ per cent., thus bringing them to the same rate which prevails in most co-operative nursing

[previous page](#)

[next page](#)